



# Elevating Safety to New Heights



## Who We Are

Macons Socage Platforms, based in Ahmedabad, is a leading provider of high-performance truck mounted aerial working platforms, dedicated to improving construction quality, operator safety, and stakeholder value. Founded with the goal of advancing the industry through world-class machinery, we leverage cutting-edge technology and scalable manufacturing to meet global demands. Our vision is to surpass traditional standards and deliver reliable, customer-focused solutions for commercial, industrial, and infrastructure projects.

Backed by a skilled technical team and strategic collaborations in the form of a JV with Socage Srl - Italy, we've localized production of previously imported machines, offering superior design and value. Socage products operate worldwide, reflecting our commitment to excellence and innovation. Every machine we build is to ELEVATING SAFETY TO NEW HIGHTS.

Socage Srl (Società di Carpenteria Generale), established in 1974, initially produced metallic components before specializing in aerial work platforms in 1981. By 1987, it partnered with FASSI to form a leading Italian group for aerial work equipment. SOCAGE S.r.l., with over 30 years of experience and global presence in all continents, manufactures and markets aerial platforms, focusing on understanding and meeting customer needs worldwide, including in India.





## Vision:

To pioneer the future of the aerial work platform industry in India by setting standards in safety, innovation, and reliability, empowering workers to reach greater heights with confidence and security.

## Mission:

Our mission is to design and deliver innovative aerial work platforms that prioritize safety, reliability, and efficiency, enabling workers to perform at their best while ensuring their safety at every height. We are committed to conducting business ethically, fostering mutual respect among our associates and employees, and creating a safe and inclusive working environment. Additionally, we are dedicated to protecting the environment and promoting sustainable practices, ensuring the welfare of all stakeholders and the communities we serve.

## Our Strength:



### Innovation

We actively implement innovative ideas, adopting European technology and Italian design elegance, to develop cutting-edge machines and deliver enhanced services, ensuring our customers benefit from futuristic solutions and exceptional value with meticulous attention to details.



### Ethics

We are committed to conducting business with integrity, fostering mutual respect, and upholding the highest ethical standards in all our interactions, ensuring trust and accountability in everything we do.



### Safety

Safety is not just a priority - it's a mindset. We are dedicated to embedding safety into every aspect of our work, ensuring protection and confidence for all our employees, partners, customers, and everyone who interacts with us or with our products.



### Sustainability

We strive to meet the demands of today's business environment while safeguarding the ability of future generations to thrive balancing environmental stewardship, economic growth, and social responsibility for a sustainable tomorrow.



### Customer Focus

Our customers are at the centre of everything we do. We are dedicated to understanding their needs, delivering innovative solutions, and providing exceptional service to ensure their success and satisfaction at every step.





# Technical Data Sheet



## **SAFETY FEATURES:**

- **Truck Chassis Hand Brake Interlock:**

The machine's operational functionality is linked with the truck chassis hand brake. This ensures machine operations are exclusively enabled when the hand brake is engaged. This safety interlock prevents unintended movement of the turret or chassis, ensuring compliance with operational safety protocols.
- **Stabilizer-Platform Interlock Mechanism:**

A fail-safe interlocking system is implemented to prevent concurrent operation of the stabilizers and platform. This ensures that the stabilizers are fully deployed and load-balanced before platform operations are permitted, mitigating risks of instability or accidental movement.
- **Spirit Level and Load-Sensing System:**

Equipped with a spirit level degree and load-sensing technology to ensure precise platform levelling. All four stabilizers must be extended and evenly loaded before the system permits turret operation. This ensures optimal load distribution and platform stability during operation.
- **360-Degree Full-Rotation Capability:**

Built with a 360-degree rotational capability in both clockwise and counterclockwise directions, providing operators with complete flexibility and range of motion for enhanced operational efficiency.
- **Anti Collision system to prevent cabin damage during rotation:**

A proximity sensor-based anti-collision system is integrated to monitor the turret's position relative to the cabin. The system dynamically restricts vertical movement when the turret is in close proximity to the cabin, preventing accidental collisions and ensuring operator safety.
- **Automatic side outreach cut-off with load based limitations:**

Configured with pressure and angle transducers to automatically adjust the side outreach based on the basket load. This system ensures that outreach is inversely proportional to the load, with lighter loads allowing greater extension and heavier loads restricting outreach to maintain stability and safety.
- **Independent Dual Control System with Emergency Stop Functionality:**

The machine features independent hydraulic valve banks and control units for the turret and basket, allowing for separate or simultaneous operation. Both control units are equipped with emergency stop buttons to immediately halt all machine functions in case of an emergency, ensuring operator safety and system integrity.
- **Turret-Mounted Electronic Inclinometer:**

by continuously monitor the machine's level positioning, this system prevents operation on uneven or sloping surfaces by ensuring the machine is positioned on a stable, compacted surface, thereby minimizing the risk of accidents due to levelling decay.
- **Dual-Location Engine Start-Stop Control:**

The machine is equipped with two engine start-stop controls from both the turret and basket control units. This feature enables operators to quickly shut down the engine when power is not required, reducing fuel consumption and enhancing operational efficiency.
- **Basket-Operated Horn Warning System:**

enabling operators to issue audible warning signals to ground personnel. This feature enhances situational awareness and helps prevent potential hazards during operation.
- **Integrated Digital Error Diagnostic Display:**

providing real-time error codes and system status updates. This allows for rapid identification and resolution of operational issues, minimizing downtime and improving maintenance efficiency.
- **Hour Meter:**

to accurately record and monitor the cumulative operational hours of the machine. It will inform when scheduled maintenance or service intervals are due, ensuring optimal performance and adherence to recommended service protocols.
- **Emergency Manual Hydraulic Pump:**

This allows for the safe lowering of the platform in the event of hydraulic or power system failure, ensuring operator safety during critical situations.
- **High-Visibility Outrigger Reflectors:**

Safety reflectors are installed on the outriggers to enhance visibility during low-light conditions. This feature improves awareness for operators and pedestrians, reducing the risk of accidents and ensuring compliance with safety standards.



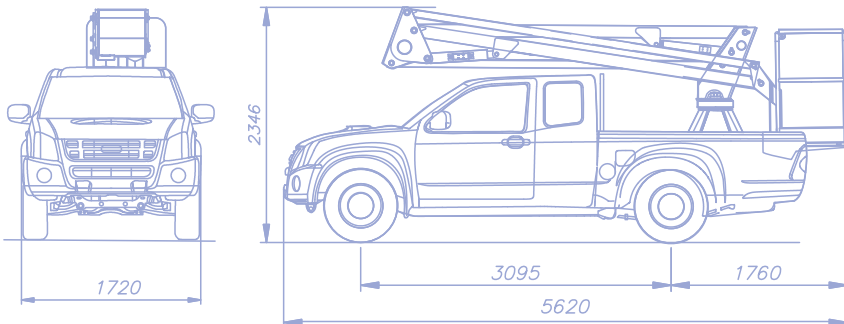
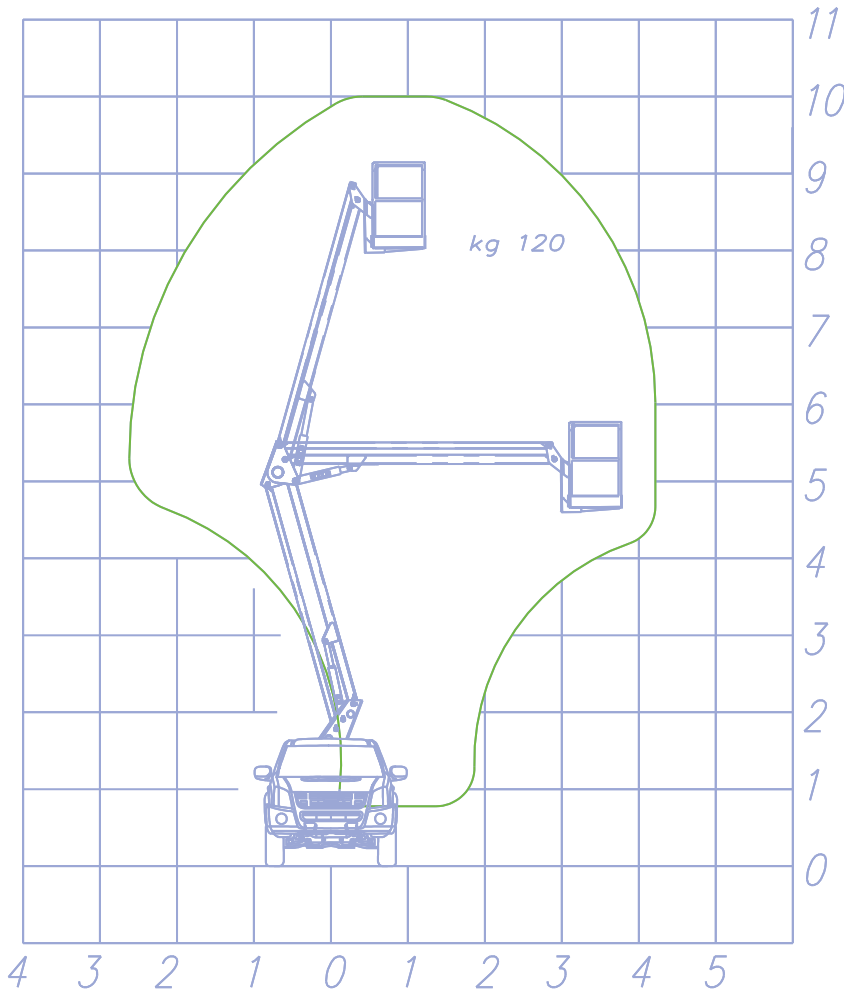




# 10A

forSte

## WORKING DIAGRAM




## INFO

- 
OUTRIGGERS  
**NO**

---

- 
WORKING HEIGHT  
**10,00 m**

---

- 
BASKET HEIGHT  
**8,00 m**

---

- 
MAX OUTREACH  
**4,20 m**


---

- 
BASKET LOAD CAPACITY  
**120 kg**

---

- 
BASKET SIZE  
**700x700x1100 mm**


---

- 
BASKET ROTATION  
**0°**

---

- 
BASKET  
**Fiberglass**

---

- 
CONTROLS  
**ELECTRICAL**

---

- 
TURRET ROTATION  
**350°**

---

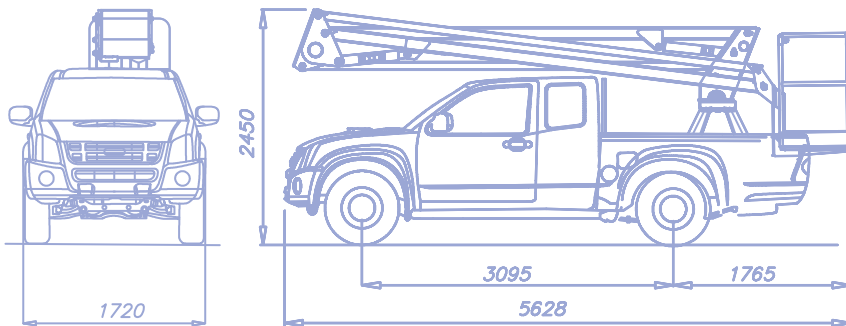
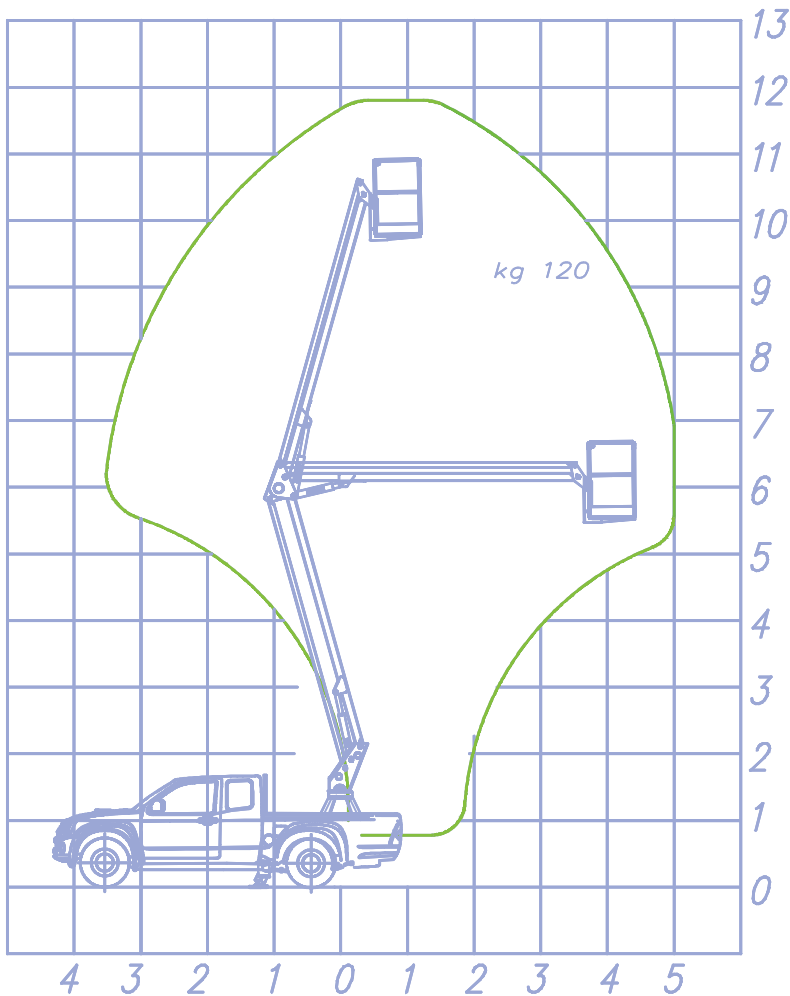
- 
GVW  
**2,9 ton**







**WORKING DIAGRAM**



**INFO**

- 

OUTRIGGERS **NO**

---

- 

WORKING HEIGHT  
**11,90 m**

---

- 

BASKET HEIGHT  
**9,90 m**

---

- 

MAX OUTREACH  
**5,00 m**

---

- 

BASKET LOAD CAPACITY  
**120 kg**

---

- 

BASKET SIZE  
**700x700x1100 mm**  
**1400x700x1100 mm**

---

- 

BASKET ROTATION  
**0°**

---

- 


BASKET  
**Fiberglass**

---

- 

CONTROLS  
**ELECTRICAL**

---

- 

TURRET ROTATION  
**350°**

---

- 

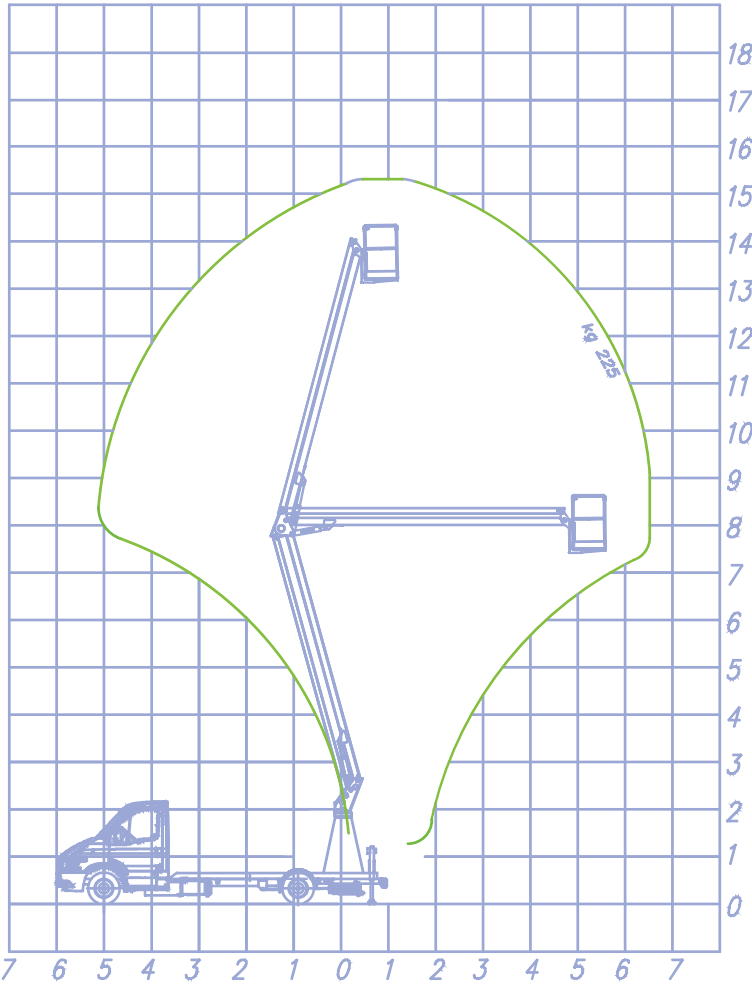
GVW  
**3,0 ton**





**WORKING DIAGRAM**

**INFO**



**OUTRIGGERS**  
H



**WORKING HEIGHT**  
15,30 m



**BASKET HEIGHT**  
13,30 m



**MAX OUTREACH**  
6,50 m



**BASKET LOAD CAPACITY**  
120 kg



**BASKET SIZE**  
700x700x1100 mm  
1400x700x1100 mm



**BASKET ROTATION**  
0°



**BASKET**  
Aluminium



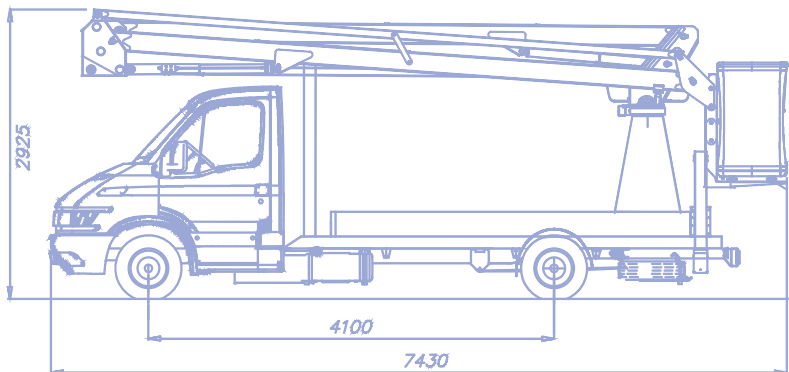
**CONTROLS**  
ELECTRICAL



**TURRET ROTATION**  
350°



**GVW**  
3,5 ton

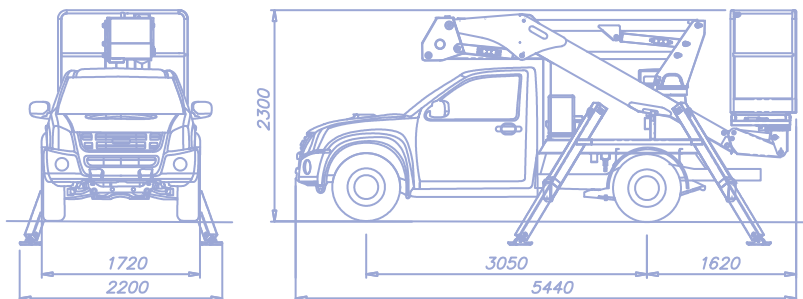
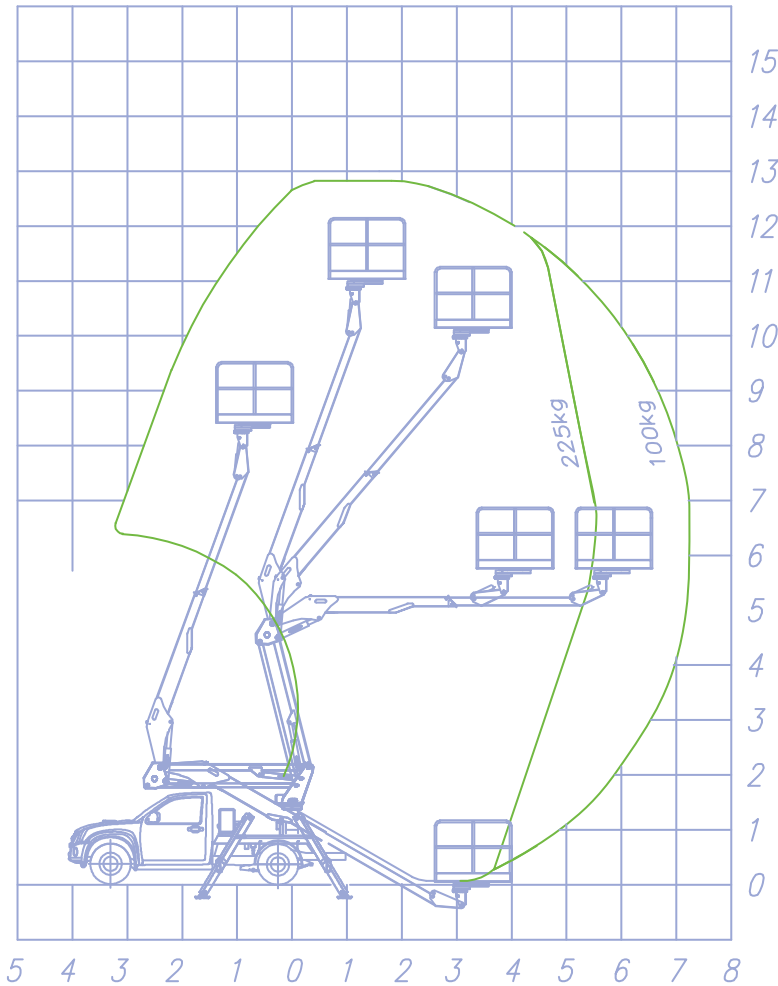









**WORKING DIAGRAM**




**INFO**

- 


**OUTRIGGERS**  
H

---

- 


**WORKING HEIGHT**  
13,20 m

---

- 


**BASKET HEIGHT**  
11,20 m

---

- 


**MAX OUTREACH**  
7,20 m

---

- 


**BASKET LOAD CAPACITY**  
225 kg

---

- 


**BASKET SIZE**  
700x700x1100 mm  
1400x700x1100 mm

---

- 


**BASKET ROTATION**  
0°

---

- 


**BASKET**  
Aluminium

---

- 


**CONTROLS**  
Hydraulic

---

- 

**TURRET ROTATION**  
270°

---

- 

**GVW**  
2,9 ton

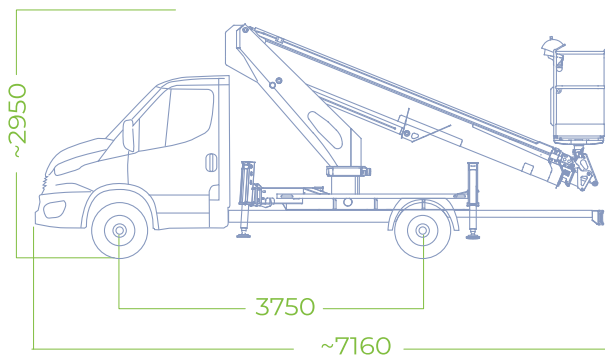
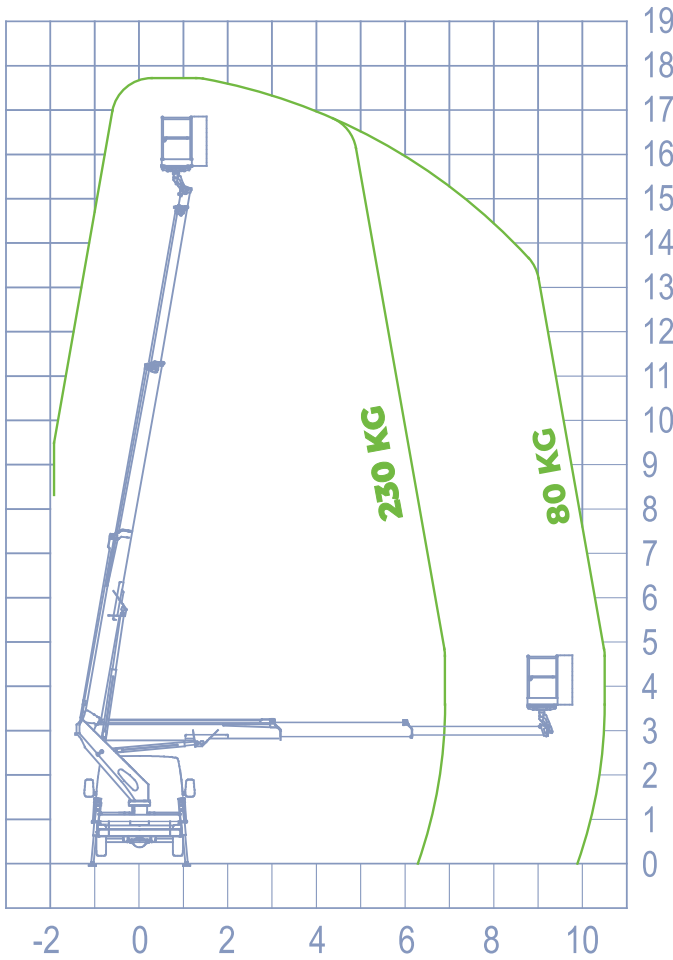









**WORKING DIAGRAM**




**INFO**

- 


**OUTRIGGERS**  
H+H

---

- 


**WORKING HEIGHT**  
17,70 m

---

- 


**BASKET HEIGHT**  
15,70 m

---

- 


**MAX OUTREACH**  
10,50 m

---

- 


**BASKET LOAD CAPACITY**  
230 kg

---

- 


**BASKET SIZE**  
1400x700x1100 mm

---

- 


**BASKET ROTATION**  
90°+90°

---

- 


**CONTROLS**  
Elettrici

---

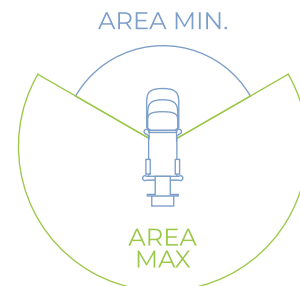
- 

**TURRET ROTATION**  
700°

---

- 

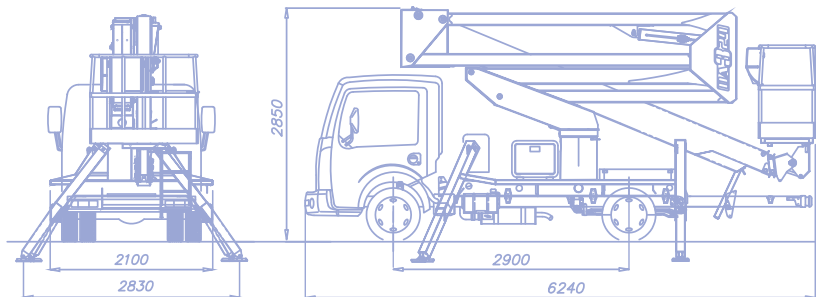
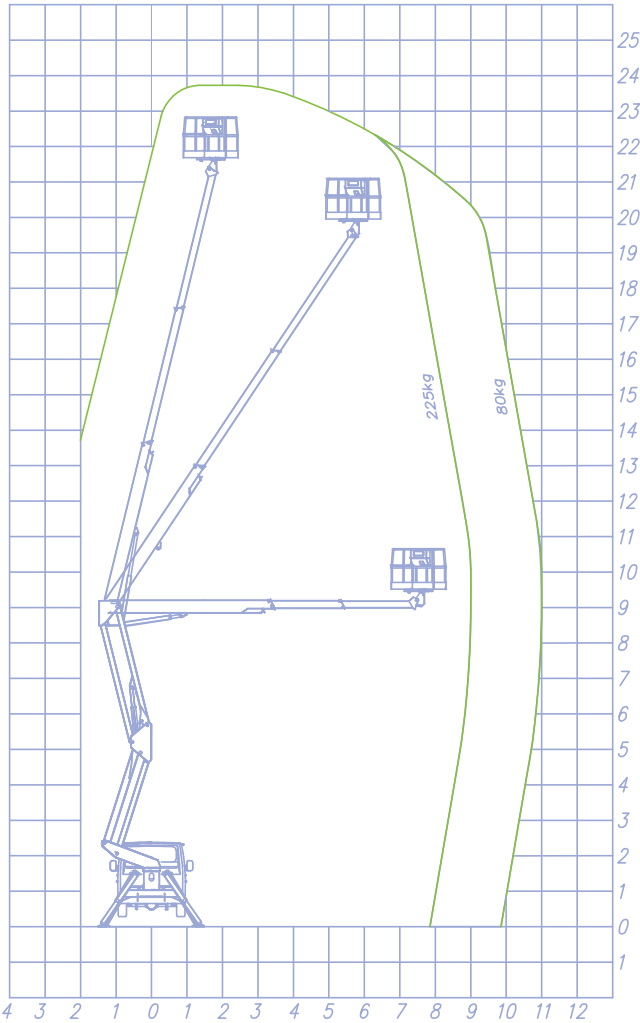
**GVW**  
3,5 ton







**WORKING DIAGRAM**



**INFO**



**OUTRIGGERS**  
A + A



**WORKING HEIGHT**  
24,00 m



**BASKET HEIGHT**  
22,00 m



**MAX OUTREACH**  
11,00 m



**BASKET LOAD CAPACITY**  
225 kg



**BASKET SIZE**  
1400x700x1100 mm



**BASKET ROTATION**  
90° + 90°



**BASKET**  
Aluminium



**CONTROLS**  
Hydraulic



**TURRET ROTATION**  
360°



**GVW**  
3,5 ton



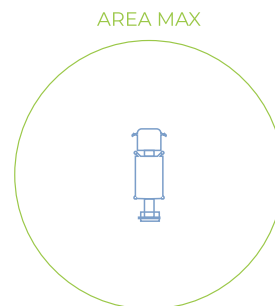
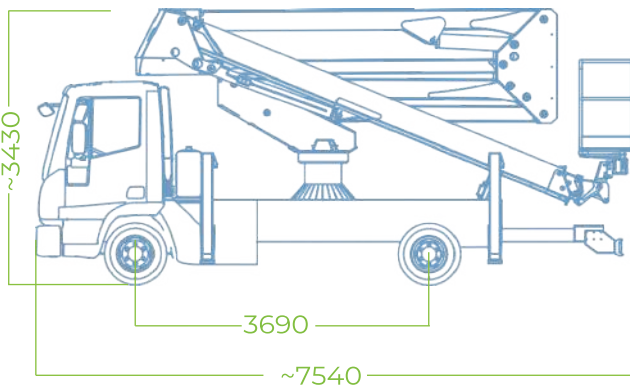
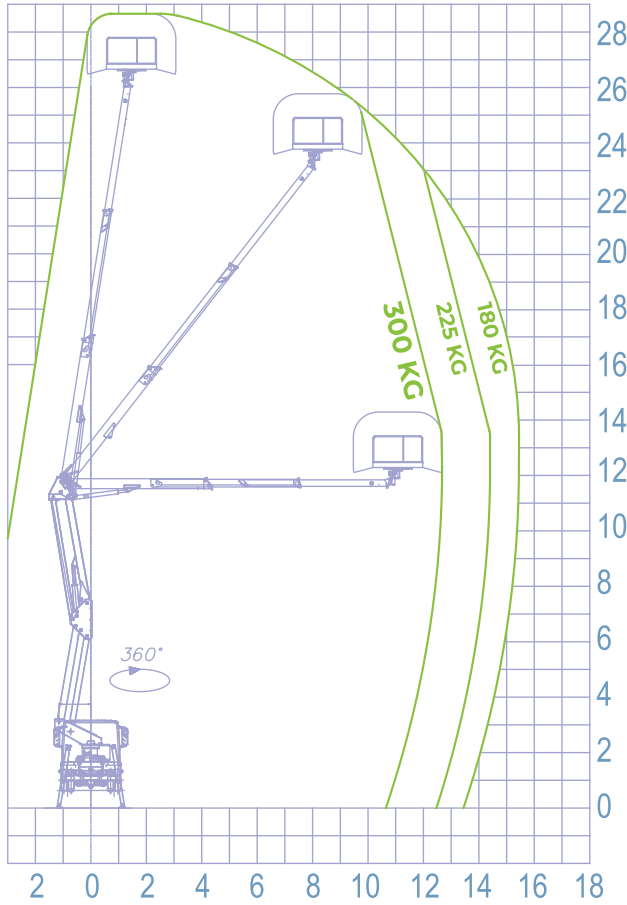









**WORKING DIAGRAM**




**INFO**

- 


**OUTRIGGERS**  
H+H

---

- 


**WORKING HEIGHT**  
28,50 m

---

- 


**BASKET HEIGHT**  
26,50 m

---

- 


**MAX OUTREACH**  
16,00 m

---

- 


**BASKET LOAD CAPACITY**  
300 kg

---

- 


**BASKET SIZE**  
1800x700x1100 mm

---

- 


**BASKET ROTATION**  
90°+90°

---

- 


**CONTROLS**  
Electric

---

- 

**TURRET ROTATION**  
700°

---

- 

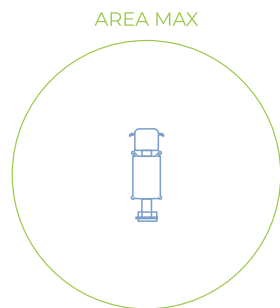
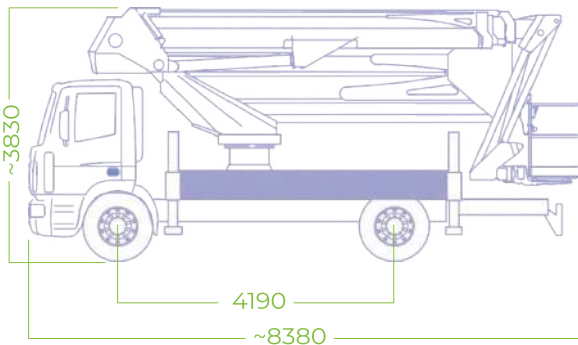
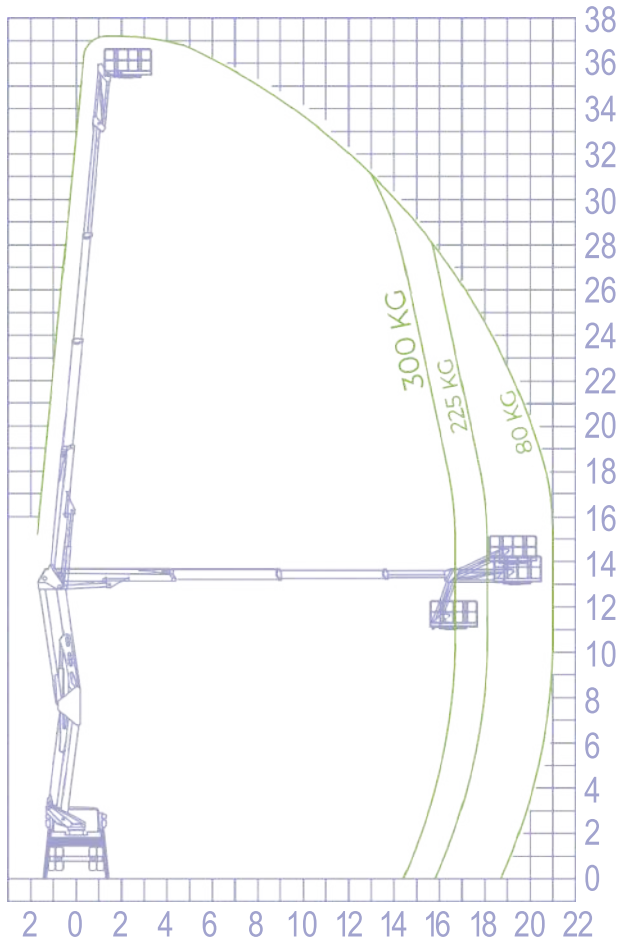
**GVW**  
10 ton








**WORKING DIAGRAM**




**INFO**

- 


**OUTRIGGERS**  
H+H

---

- 


**WORKING HEIGHT**  
37,30 m

---

- 


**BASKET HEIGHT**  
35,30 m

---

- 


**MAX OUTREACH**  
21,00 m

---

- 


**BASKET LOAD CAPACITY**  
300 kg

---

- 


**BASKET SIZE**  
2000x800x1100 mm

---

- 


**BASKET ROTATION**  
90°+90°

---

- 


**CONTROLS**  
Electric

---

- 

**TURRET ROTATION**  
700°

---

- 

**GVW**  
18 ton

[socageworld.com](http://socageworld.com)



**SOCAGE**



# MACONS

## SOCAGE

### Customers that Rely on our Machines:



### Get In Touch

#### Macons Socage Platforms Pvt. Ltd.

##### Corporate Office :

11, Abhishree Corporate Park, Opp. Swagat Bungalow BRTS Bus Stop,  
Bopal - Ambli Road, Ahmedabad - 380058, Gujarat, India.

- +91 07929795401
- info@macons-socage.co.in
- www.maconsocage.co.in

##### Registered Office & Plant :

Plot no.37/C, Phase - 1, G.I.D.C Estate, Vatva,  
Ahmedabad - 382445, Gujarat, India.

- +91 9909932358
- sales@macons-socage.co.in
- www.maconsocage.co.in